



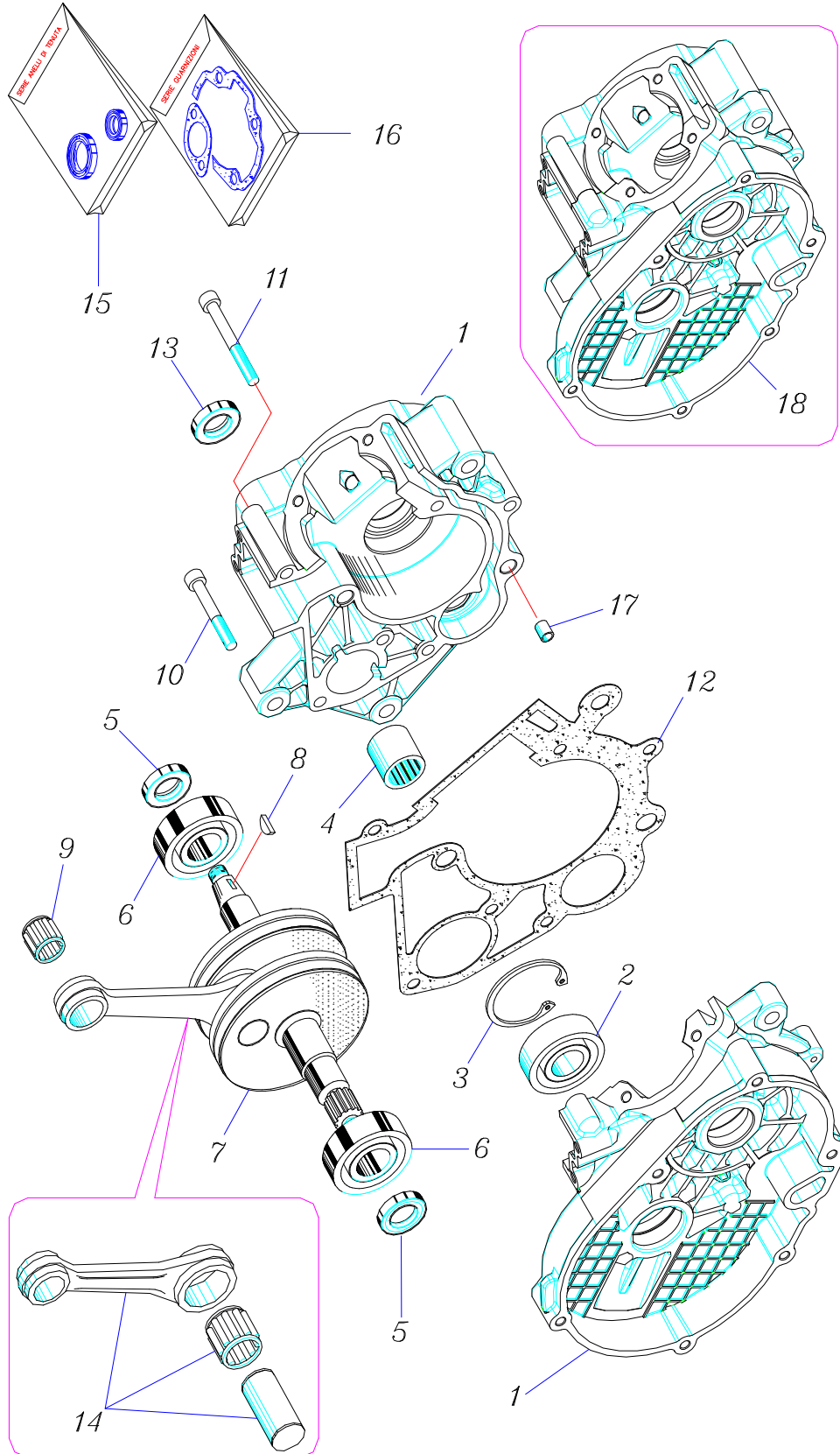
**SPARE PARTS**

**ENGINE S6/T**

**ENGINE BLOCK**

CODE	DENOMINATION	QTY.	NOTES	TABLE
12-0690	COMPLETE CRANKCASE	1		A 01
12-6067	BEARING 17-35-10	1		A 02
10-5070	SNAP RING FOR HOLE DIAM. 36	1		A 03
10-8512	ROLLER CAGE HK 1712 B	1		A 04
10-6033	OIL SEAL 17-27-6	2		A 05
16-6021	BEARING 17-40-12	2		A 06
10-0187	CRANKSHAFT	1		A 07
12-7025	FLYWHEEL KEY	1		A 08
16-1024	ROLLER CAGE 12-15-15	1		A 09
29-1991	BOLT M6x50	7		A 10
29-1993	BOLT M6x60	1		A 11
16-4297	HALF CRANKCASE GASKET	1		A 12
10-6034	OIL SEAL 17-25-5	1		A 13
11-0040	COMPLETE CONNECTING ROD	1		A 14
	SET OF GAS RINGS			A 15
	SET OF GASKETS			A 16
12-0699	COMPLETE CRANKCASE <b>OIL MIXER PUMP VERSION</b>	1		A 18

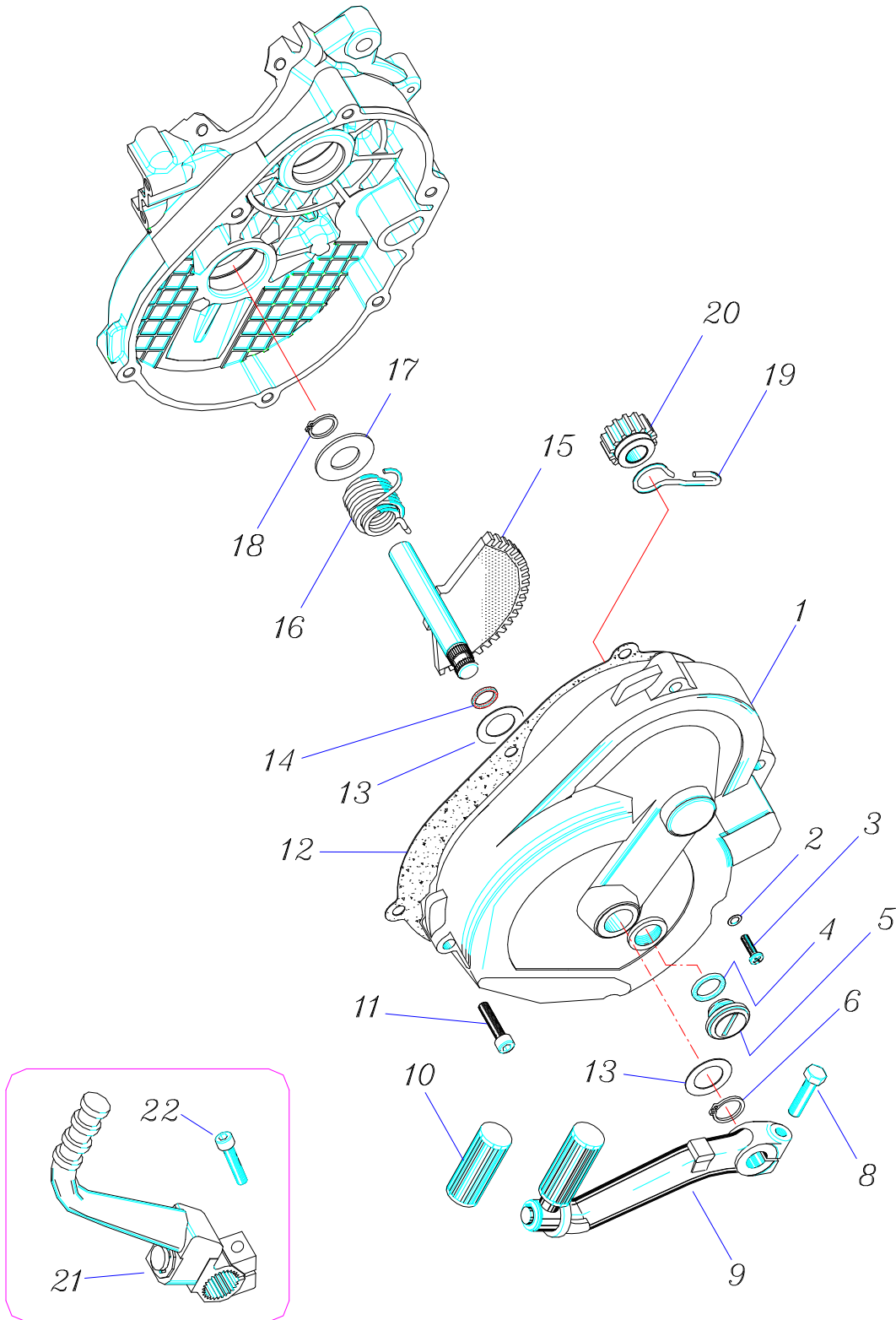
ENGINE BLOCK



**KICK STARTER UNIT AND CLUTCH COVER**

CODE	DENOMINATION	QTY.	NOTES	TABLE
12-4257	CLUTCH COVER	1		B 01
16-4069	OIL DRAIN PLUG WASHER	1		B 02
29-6001	OIL DRAIN PLUG	1		B 03
16-4026	OIL FILLER CAP GASKET	1		B 04
27-3007	OIL FILLER CAP	1		B 05
10-5001	SNAP RING DIAMETER 14	1		B 06
29-4115	BOLT M7 x 25 FOR KICK STARTER LEVER ALUMINIUM	1		B 08
19-0029	KICK STARTER LEVER ALUMINIUM	1		B 09
16-3028	RUBBER PAD FOR KICK STARTER LEVER ALUMINIUM	1		B 10
29-1987	BOLT M6 x 30	6		B 11
16-4296	CLUTCH COVER GASKET	1		B 12
25-4005	SPACER RING 0.8mm	2		B 13
10-7024	KICK STARTER SHAFT O-RING	1		B 14
10-0188	KICK STARTER SHAFT	1		B 15
20-1181	KICK STARTER RETURN SPRING	1		B 16
25-4010	SPRING WASHER	1		B 17
10-5029	SNAP RING DIAMETER 15	1		B 18
20-1182	RETURN SPRING FOR SLIDING GEAR	1		B 19
18-1300	SLIDING GEAR	1		B 20
19-0052	KICK STARTER LEVER STEEL	1		B 21
29-1985	BOLT M7 x 25 FOR KICK STARTER LEVER STEEL	1		B 22

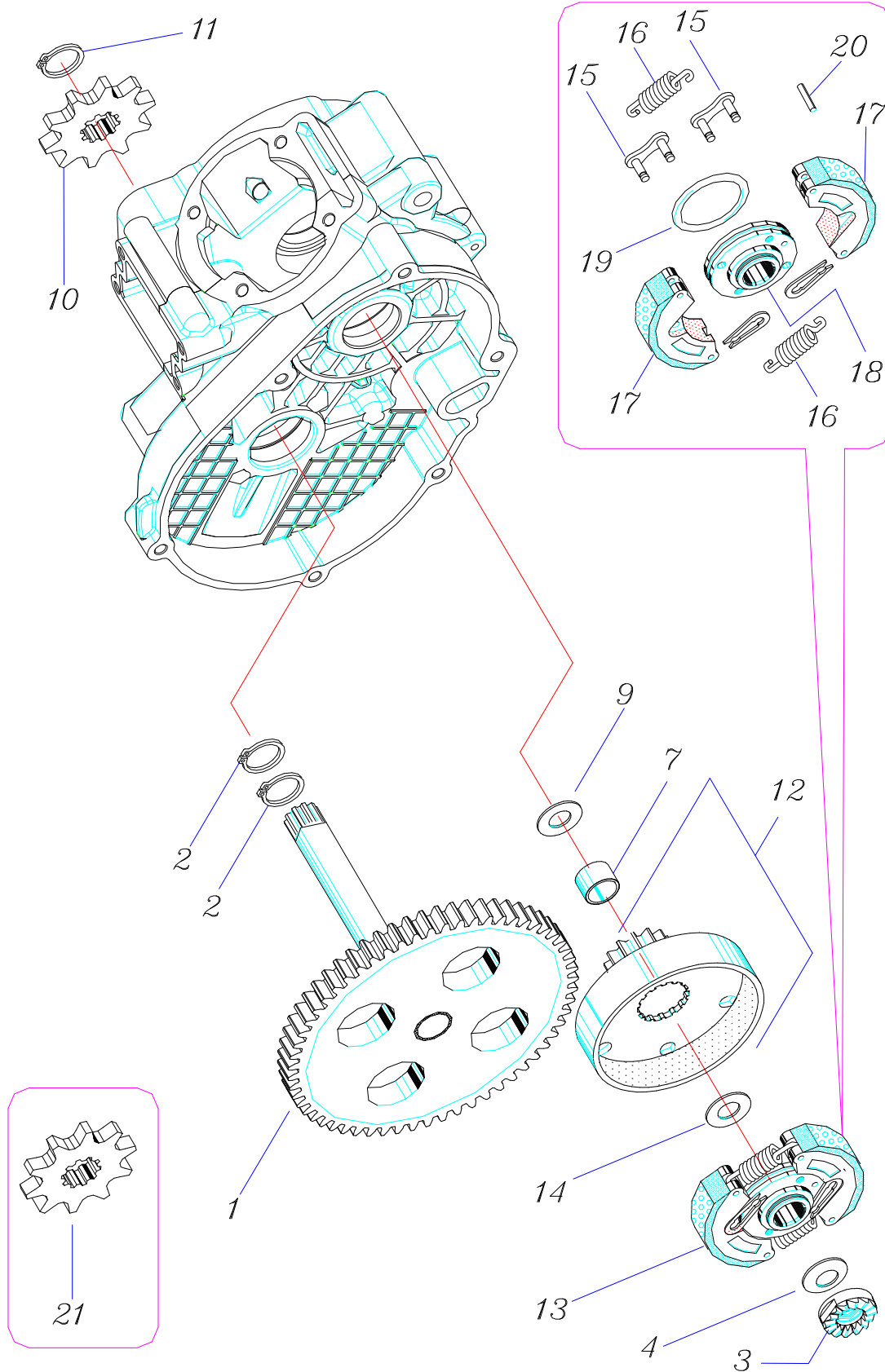
**KICK STARTER UNIT AND CLUTCH COVER**



**TRANSMISSION AND CLUTCH**

<b>CODE</b>	<b>DENOMINATION</b>	<b>QTY.</b>	<b>NOTES</b>	<b>TABLE</b>
12-0689	OUTPUT SHAFT	1		C 01
10-5077	SNAP RING DIAMETER 17	2		C 02
13-1035	FRONT-CLUTH NUT	1		C 03
20-1195	BELLEVILLE WASHER	1		C 04
11-5097	DRIVE GEAR BUSHING	1		C 07
26-4005	SPACER RING 0.8 mm CRANCKSHAFT CLUTH SIDE	1		C 09
23-2608	CHAIN SPROCKET Z10	1		C 10
10-5035	SNAP RING DIAMETER 16 FOR CHAIN SPROCKET	1		C 11
18-0031	CLUTH BELL	1		C 12
20-0090	COMPLETE CLUTH	1		C 13
13-6130	SPACER RING 2.5 mm CLUTCH BELL	1		C 14
12-0558	CLUTH SHOE JOINT	2		C 15
20-1130	CLUTH SHOE SPRING	2		C 16
12-7020	CLUTCH SHOE	2		C 17
20-6087	CLUTH SHOE HUB	1		C 18
10-7065	SPACE RING CLUTH SHOE HUB	1		C 19
25-7002	PIN	4		C 20
23-2611	CHAIN SPROCKET Z11	1		C 21

**TRANSMISSION AND CLUTCH**

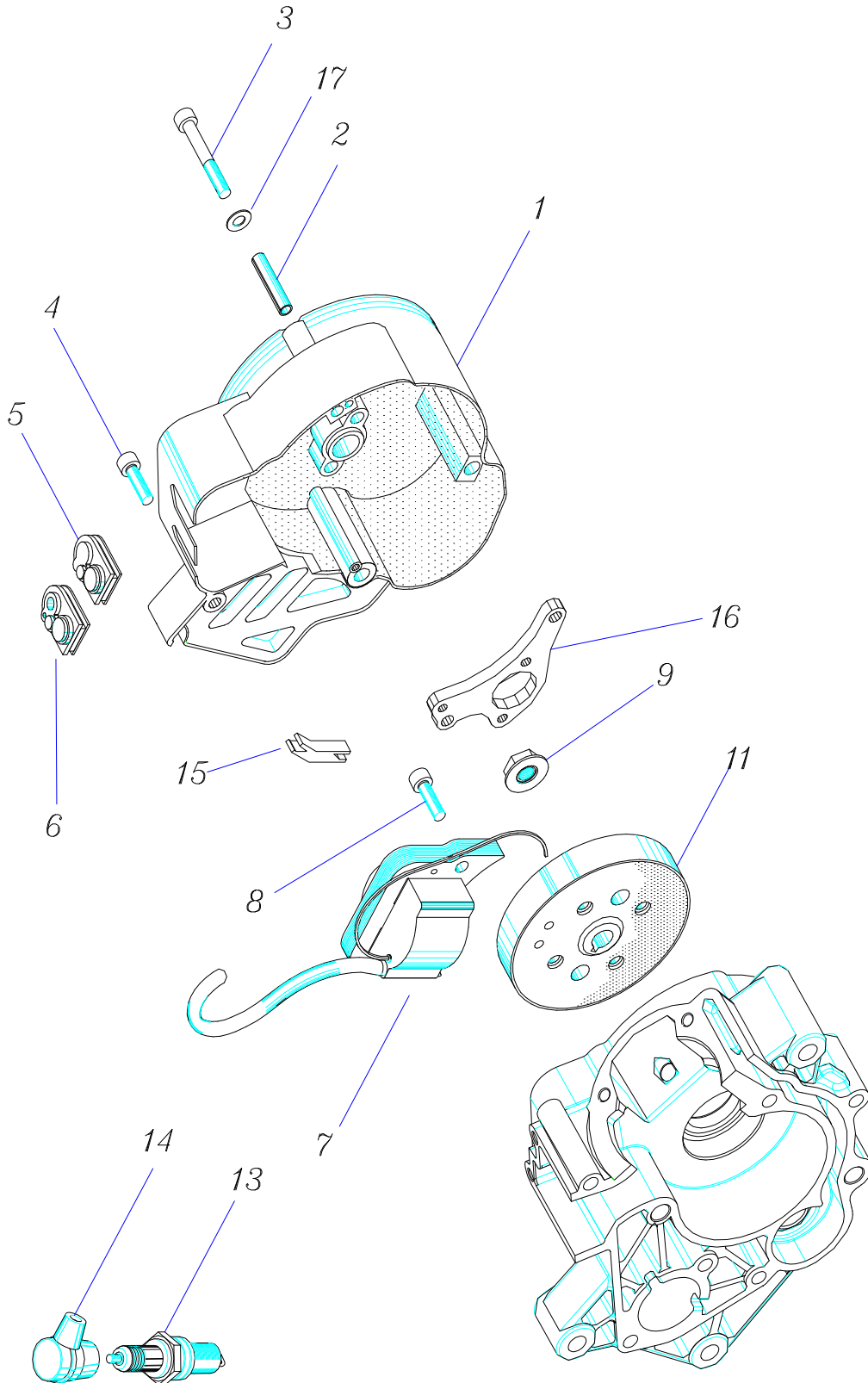


**IGNITION UNIT AND FLYWHEEL COVER**

<b>CODE</b>	<b>DENOMINATION</b>	<b>QTY</b>	<b>NOTES</b>	<b>TABLE</b>
12-4260	FLYWHEEL COVER	1		D 01
16-7056	ELASTIC DOWEL PIN	2		D 02
29-1966	SCREW M5x 50	3		D 03
29-1959	SCREW M5x 20	1		D 04
16-3075	RUBBER PAD	1		D 05
16-3078	RUBBER FAIRLEAD	2		D 06
14-0003	IGNITION COIL	1		D 07
29-1957	CLAMPING BOLT IGNITION COIL	2		D 08
13-1032	FLYWHEEL NUT	1		D 09
29-0161	FLYWHEEL	1		D 11
12-7346	SPARK PLUG	1		D 13
23-7152	SPARK PLUG CAP	1		D 14
16-3081	RUBBER FLYWHEEL COVER	1		D 15
26-8257	BRACKET FLYWHEEL COVER	1		D 16
25-4240	WASHER	4		D 17



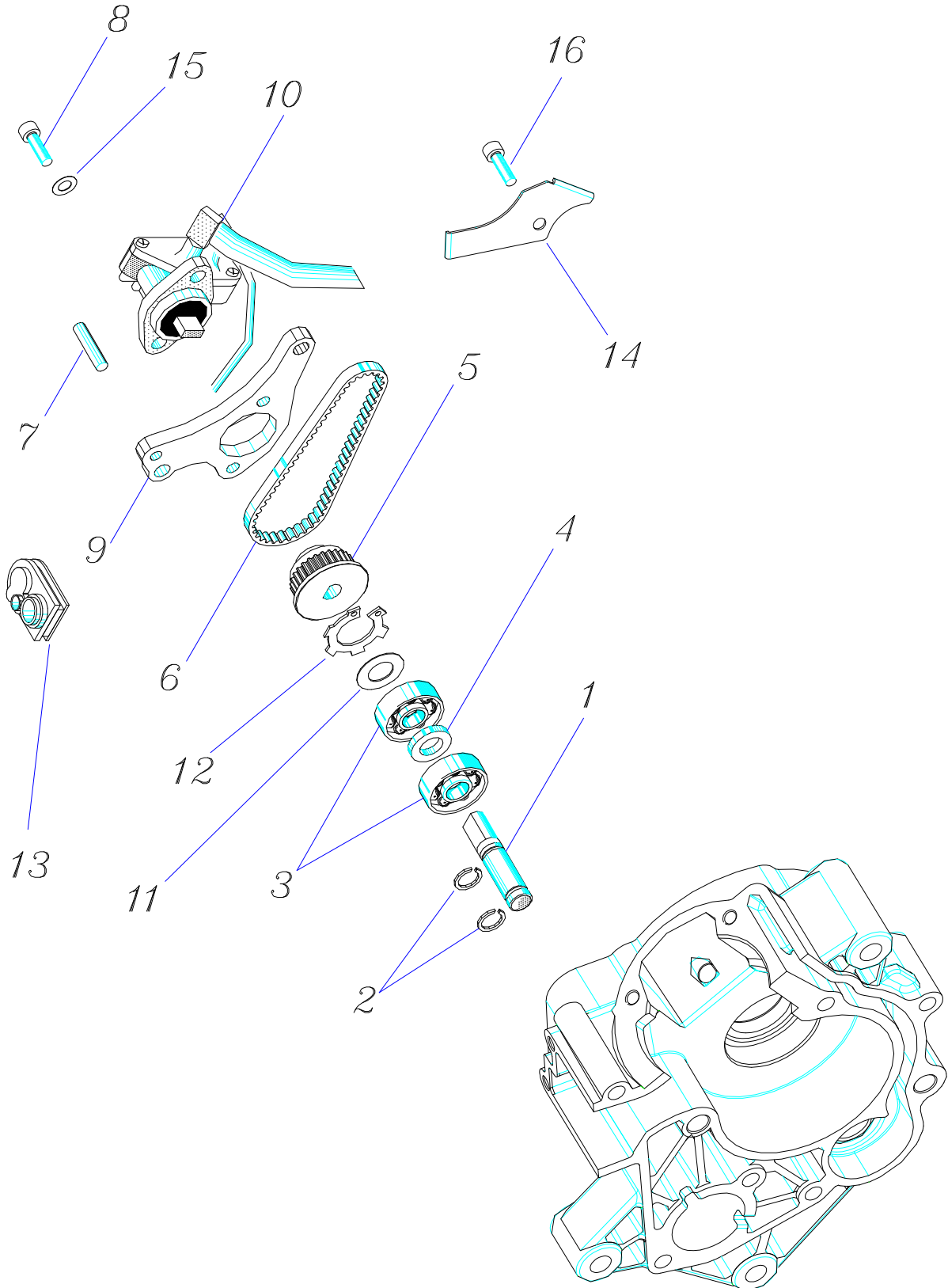
**IGNITION UNIT AND FLYWHEEL COVER**



**OIL MIXER PUMP UNIT**

CODE	DENOMINATION	QTY.	NOTES	TABLE
10-1236	OIL MIXER PUMP DRIVE SHAFT	1		F 01
10-5061	SNAP RING DIAMETER 8 TYPE SW	2		F 02
12-6038	BEARING 8-22-7 2RS	2		F 03
13-6125	SPACER RING	1		F 04
23-0091	DRIVEN PULLEY	1		F 05
12-7335	DRIVE BELT	1		F 06
25-7134	PIN DIAMETER 4 x 17.8	1		F 07
29-1955	BOLT M5 x 12	2		F 08
26-8238	BRACKET OIL MIXER PUMP SUPPORT	1		F 09
25-0095	COMPLETE OIL MIXER PUMP	1		F 10
25-4227	SPACER RING	1		F 11
13-7006	BEARING SNAP RING	1		F 12
16-3076	RUBBER FAIRLEAD	1		F 13
23-7143	TUBE HOLDER PLATE	1		F 14
25-4013	WASHER	2		F 15
29-1954	SCREW TUBE HOLDER PLATE	1		F 16

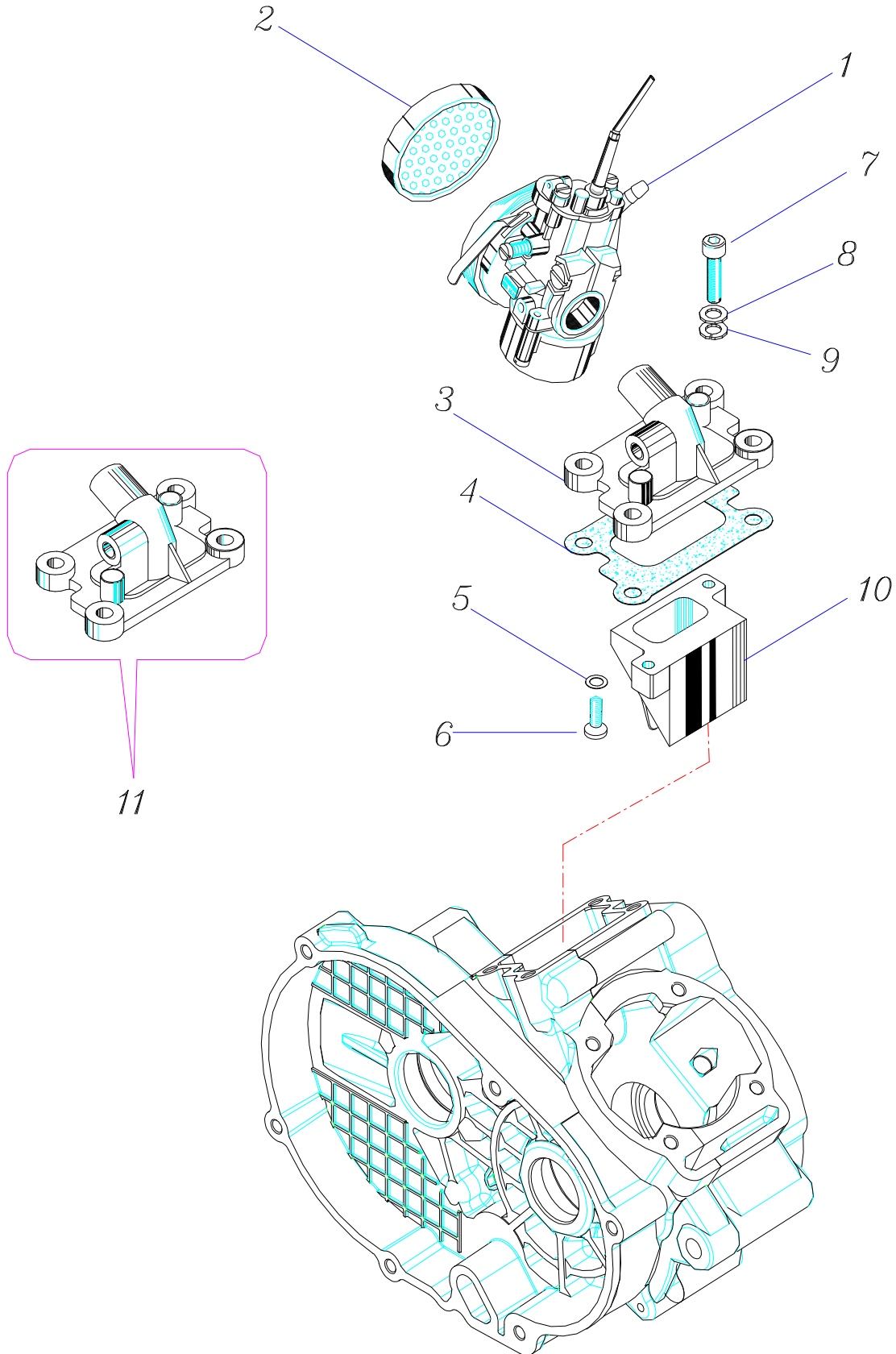
**OIL MIXER PUMP UNIT**



**CARBURETOR UNIT**

CODE	DENOMINATION	QTY.	NOTES	TABLE
12-0153	CARBURETOR SHA 14/12	1		G 01
	METAL AIR FILTER	1		G 02
25-1163	CARBURETOR MANIFOLD	1		G 03
16-4304	CARBURETOR MANIFOLD GASKET	1		G 04
25-4086	WASHER	2		G 05
29-6137	CLAMPING BOLT REED VALVE	2		G 06
29-1984	BOLT M6x20	4		G 07
25-4238	SPRING WASHER	4		G 08
25-4001	WASHER	4		G 09
29-0527	REED VALVE	1		G 10
25-0100	CARBURETOR MANIFOLD OIL MIXER PUMP VERSION	1		G 11

**CARBURETOR UNIT**



**CYLINDER - PISTON - CYLINDER HEAD**

CODE	DENOMINATION	QTY.	NOTES	TABLE
77-3966	COMPLETE CYLINDER AND PISTON KIT	1		H 01
23-0182	COMPLETE PISTON	1		H 02
27-5091	CYLINDER HEAD	1		H 03
13-1005	HEAD NUT	4		H 04
25-4001	WASHER	4		H 05
20-5051	CYLINDER / HEAD STUD BOLT	4		H 06
16-4309	CYLINDER HEAD GASKET	1		H 07
12-7336	CYLINDER CLAMPING STUD BOLT	4		H 08
25-4081	WASHER DIAM. 7.5	4		H 09
23-5032	CRANKCASE / CYLINDER STUD BOLT	4		H 10
16-4314	CYLINDER BASE GASKET	1		H 11
10-7065	EXHAUST PORT O-RING GASKET	2		H 12
16-3047	ANTI VIBRATION RUBBER PAD	4		H 13
26-1056	PISTON RINGS	2		H 14
26-8107	PISTON PIN	1		H 15
10-4001	PISTON PIN CIRCLIP	2		H 16

